



# CLCC1 Polyclonal Antibody

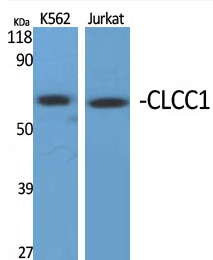
<b>Catalog No</b>	YP-Ab-16402
<b>Isotype</b>	IgG
<b>Reactivity</b>	Human;Rat;Mouse;
<b>Applications</b>	WB;IF;ELISA
<b>Gene Name</b>	CLCC1
<b>Protein Name</b>	Chloride channel CLIC-like protein 1
<b>Immunogen</b>	The antiserum was produced against synthesized peptide derived from human CLCC1. AA range:391-440
<b>Specificity</b>	CLCC1 Polyclonal Antibody detects endogenous levels of CLCC1 protein.
<b>Formulation</b>	Liquid in PBS containing 50% glycerol, 0.5% BSA and 0.02% sodium azide.
<b>Source</b>	Polyclonal, Rabbit,IgG
<b>Purification</b>	The antibody was affinity-purified from rabbit antiserum by affinity-chromatography using epitope-specific immunogen.
<b>Dilution</b>	Western Blot: 1/500 - 1/2000. Immunofluorescence: 1/200 - 1/1000. ELISA: 1/40000. Not yet tested in other applications.
<b>Concentration</b>	1 mg/ml
<b>Purity</b>	≥90%
<b>Storage Stability</b>	-20°C/1 year
<b>Synonyms</b>	CLCC1; KIAA0761; MCLC; Chloride channel CLIC-like protein 1; Mid-1-related chloride channel protein 1
<b>Observed Band</b>	62kD
<b>Cell Pathway</b>	Endoplasmic reticulum membrane ; Multi-pass membrane protein . Golgi apparatus membrane ; Multi-pass membrane protein . Nucleus membrane ; Multi-pass membrane protein . Within the endoplasmic reticulum (ER), localizes to the mitochondria-associated ER membrane, a zone of contact between the ER and mitochondrial membranes. .
<b>Tissue Specificity</b>	Expressed in the retina of the eye, with extensive expression in the lamina cribrosa, optic nerve, ganglion cell layer, inner nuclear layer, outer nuclear layer and retinal pigment epithelium.
<b>Function</b>	function:Seems to act as a chloride ion channel.,similarity:Belongs to the chloride channel MCLC family.,
<b>Background</b>	function:Seems to act as a chloride ion channel.,similarity:Belongs to the chloride channel MCLC family.,
<b>matters needing attention</b>	Avoid repeated freezing and thawing!



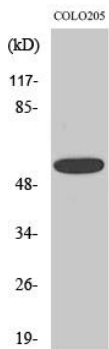
### Usage suggestions

This product can be used in immunological reaction related experiments. For more information, please consult technical personnel.

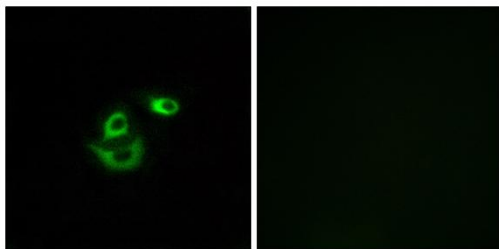
## Products Images



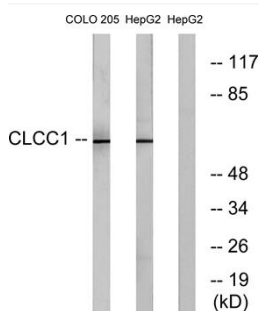
Western Blot analysis of various cells using CLCC1 Polyclonal Antibody diluted at 1:1000



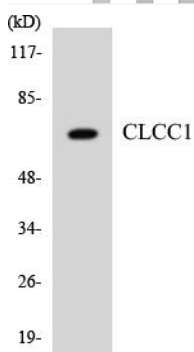
Western Blot analysis of HepG2 cells using CLCC1 Polyclonal Antibody diluted at 1:1000



Immunofluorescence analysis of A549 cells, using CLCC1 Antibody. The picture on the right is blocked with the synthesized peptide.



Western blot analysis of lysates from COLO and HepG2 cells, using CLCC1 Antibody. The lane on the right is blocked with the synthesized peptide.



Western blot analysis of the lysates from HT-29 cells using CLCC1 antibody.